



WOODEN
FLOORING

PRODUCT

CATALLO
EURO

2017



Euro Flooring Pvt. Ltd. established in 2003, is one of the largest importers of wooden flooring products in India having its corporate office in Bangalore and Pan India presence with offices in every metro city and retail outlets across the country.

Euro Wooden Flooring product line offers a versatile and exclusive range of laminate flooring, solid wood flooring, bamboo flooring, engineered flooring, decking, sports flooring. These products are manufactured in line, according to European norms with highest technical specifications and with finest quality, customized to match Indian micro-climatic conditions, also these products are reasonably durable, hygienic and relatively easy to maintain.

As a team, Euro Wooden Flooring always try to come up with pioneering designs for its clients with single minded motto of providing best in class products. Being one of the major providers of high-end flooring solutions, we strive to offer flexibility, artistry and simplicity in a single package. With an excellent track record for the best customer satisfaction we never compromise on the quality and the services provided to customer. We believe in keeping the customers happy and providing them with products at a very competent price.

We are also expanding our footprints in the country and continuously adding new products to our portfolio.



Our Mission

To serve our customers with High quality products and comprehensive flooring solutions through merge of technical excellence, stupendous Customer service. Another vital priority for us will be to persuade our clients and associates with Innovations and Moral Commitments.

Our Vision

We intent to be the largest and fastest suppliers for the wooden flooring in India and scattering our products and services to international level, with an astonishing team work, all these efforts to set sky-scraping trade standards for both industry and for our own establishment, maintaining the ethics, to stronger the professional bond between us and our clients.



WOODEN
FLOORING

Solid Wood

SOLID WOOD

Euro Flooring has a wide range of products with different finishes in a multitude of wood species to meet spectrum demands. All flooring products have few things in common that they are created by nature and engineered with the latest technology. Natural Range products are nothing but naturally seasoned flooring to give lifelong durability for many years, reflecting the true spirit of wood.



Burma Teak



WOODEN FLOORING

SOLID WOOD

Product Details :

Code Nos. & Name	Thick. (mm)	Dimension	No. of Planks	Sq.ft.	Page No.
American Walnut	18	RL (300-1200) x 93mm	–	21.62	05
		RL (300-1200) x 123mm	–	19.07	
Burma Teak	18	RL (300-850) x 93mm	–	21.62	06
		RL (300-850) x 123mm	–	19.07	
Indonesian Teak	18	RL (300-1300) x 91mm	–	22.22	07
Garapa	18	RL (300-1200) x 123mm	–	19.07	08
Jatoba	18	910 mm x 124mm	12	14.58	09
Merbau	18	910 mm x 125mm	12	14.69	10
Okan	18	910 mm x 120mm	16	18.81	11
Tava (Taun)	18	910 mm x 90mm	14	12.34	12
Natural Oak	18	910 mm x 92mm	12	10.81	13
Walnut Oak	18	910 mm x 92mm	12	10.81	14
Tuscany Oak	18	910 mm x 92mm	12	10.81	15
SOLID WOOD FLOORING					
Mariosousa Dusk	18	910 mm x 120mm	16	18.81	16
Senegalia Teak	18	910 mm x 120mm	16	18.81	17
Vachelia Golden Teak	18	910 mm x 120mm	16	18.81	18
Wattle Walnut	18	910 mm x 120mm	16	18.81	19



Jatoba



American Walnut

RL (300-1200)mm x 93mm x 18mm



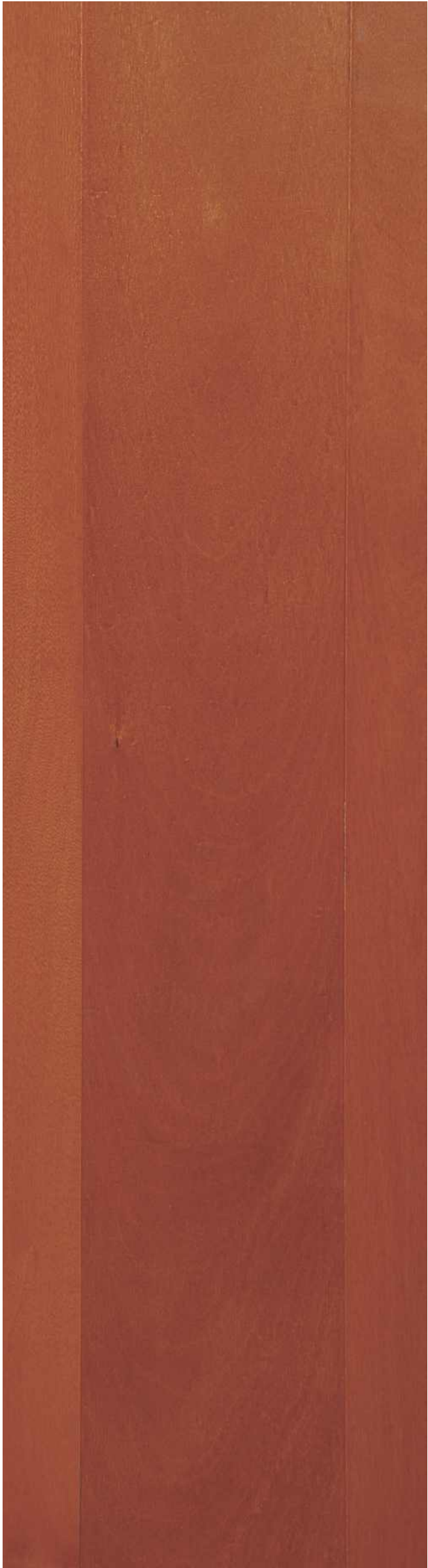
RL (300-850)mm x 93mm x 18mm

Burma Teak



Indonesian Teak

RL (300-1300)mm x 91mm x 18mm



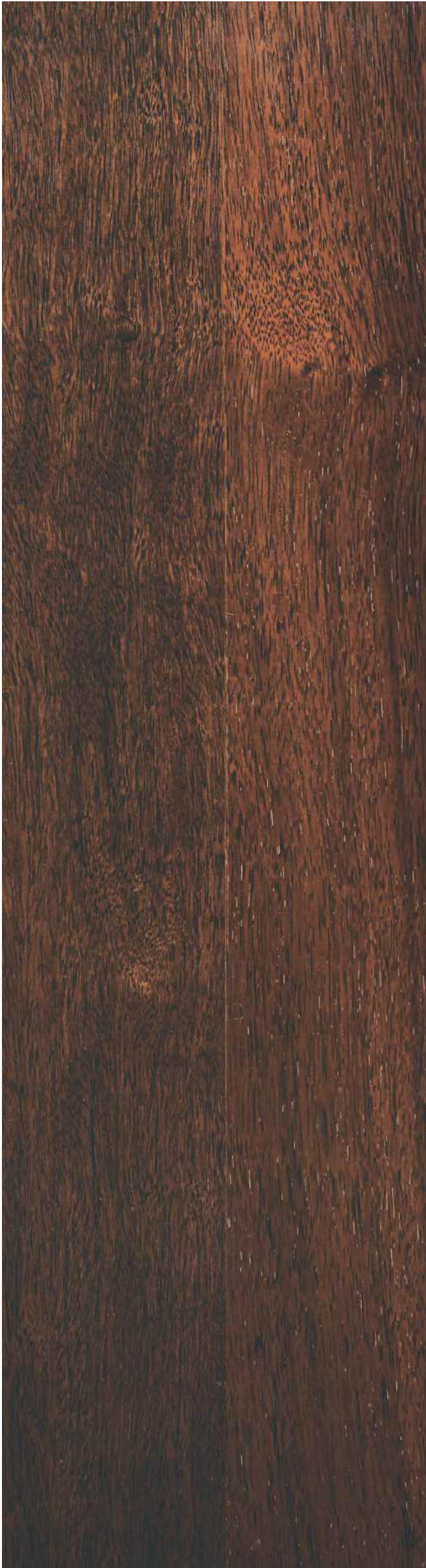
RL (300-1200)mm x 123mm x 18mm

Garapa



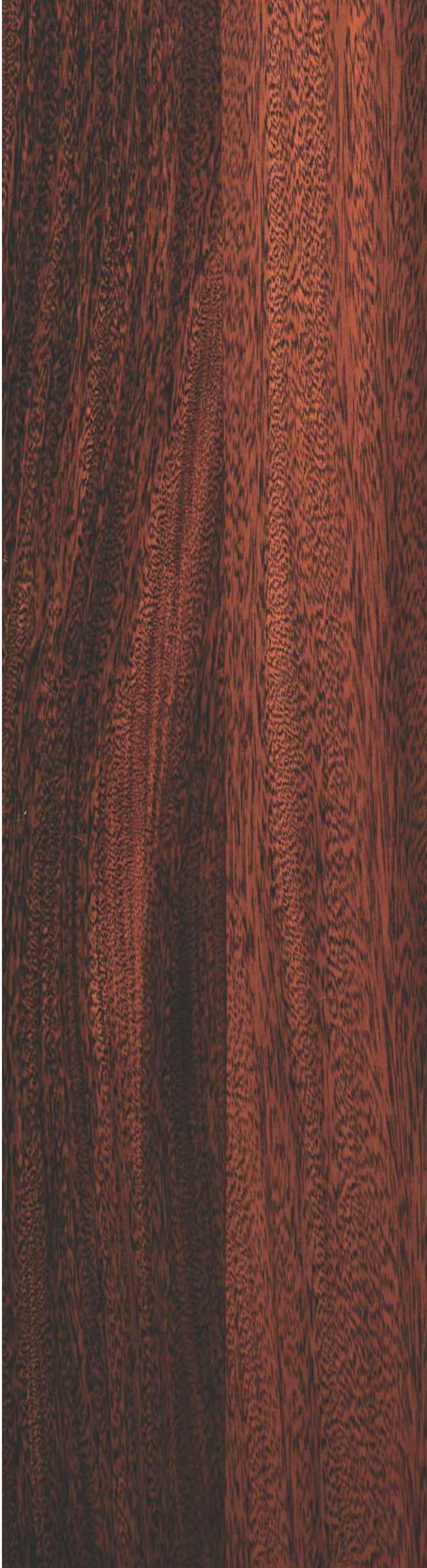
Jatoba

910 mm x 124mm x 18mm



910 mm x 125mm x 18mm

Merbau



Okan

910 mm x 125mm x 18mm



910 mm x 90mm x 18mm

Tava (Taun)



Natural Oak

910 mm x 92mm x 18mm



910 mm x 92mm x 18mm

Walnut Oak



Tuscany Oak

910 mm x 92mm x 18mm



910mm x 120mm x 18mm

Mariosousa Dusk



Senegalia Teak

910mm x 120mm x 18mm



910mm x 120mm x 18mm

Vachelia Golden Teak



Wattle Walnut

910mm x 120mm x 18mm



Tuscany Oak



WOODEN
FLOORING

EXOTIC BAMBOO

- Bright, clean and beautiful appearance.
- Water resistant, Insect resistant & Fire resistant.
- Offers tremendous interior design flexibility.
- Provides a unique grain and distinctive coloring.
- It has Aluminum Oxide finish.

Exotic Bamboo



Bamboo Carbonised Horizontal



WOODEN
FLOORING

EXOTIC BAMBOO

Product Details :

Code Nos. & Name	Thick. (mm)	Dimension	No. of Planks	Sq.ft.	Page No.
Bamboo Carbonised Horizontal	14	—	6	23.80	23
Bamboo Earth	14	1850mm x 125mm	6	14.96	24
Bamboo Dark	14	1850mm x 125mm	6	14.96	25
Bamboo Walnut	14	1850mm x 125mm	6	14.96	26
Bamboo Snow	14	1850mm x 125mm	6	14.96	27
Bamboo Lava	14	1850mm x 125mm	6	14.96	28
Bamboo Silver Grey	14	1850mm x 125mm	6	14.96	29



Bamboo Walnut



Bamboo Carbonised Horizontal



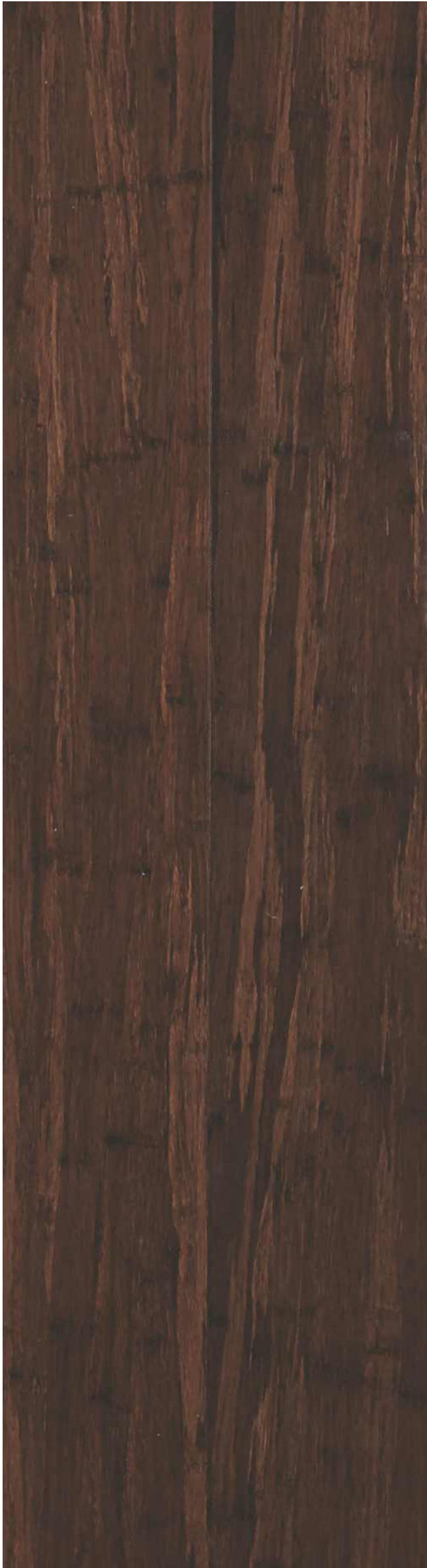
1850mm x 125mm x 14mm

Bamboo Earth



Bamboo Dark

1850mm x 125mm x 14mm



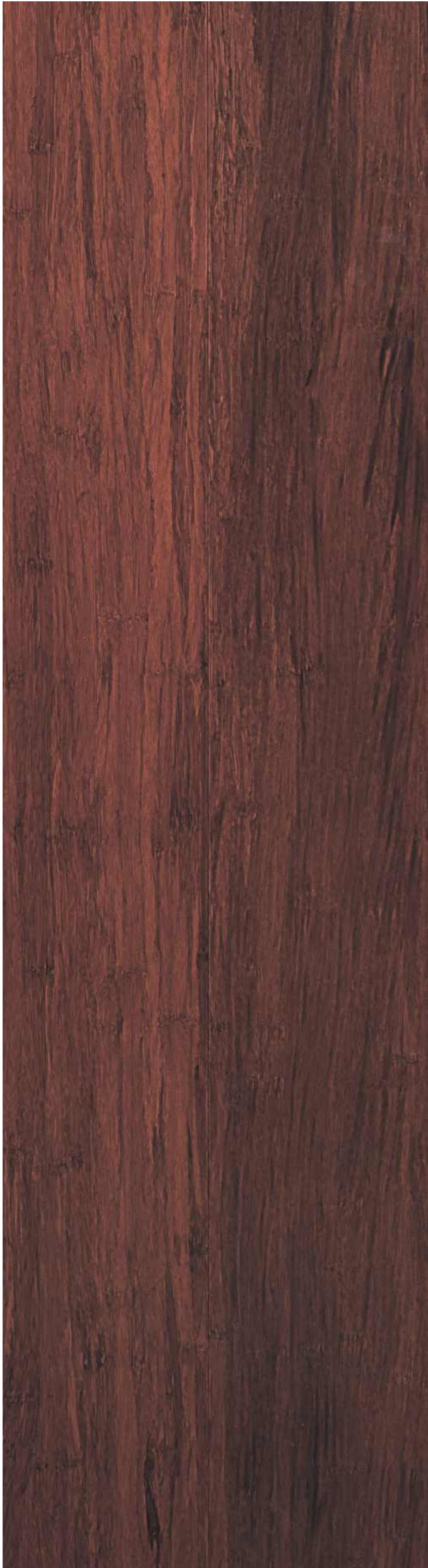
1850mm x 125mm x 14mm

Bamboo Walnut



Bamboo Snow

1850mm x 125mm x 14mm



1850mm x 125mm x 14mm

Bamboo Lava



Bamboo Silver Grey

1850mm x 125mm x 14mm





WOODEN
FLOORING

ENGINEERED

Engineered wood flooring is composed of two or more layers of wood in the form of a plank. The top layer (lamella) is the wood that is visible when the flooring is installed and is adhered to the core. The increased stability of engineered wood is achieved by running each layer at a 90° angle to the layer above. This stability makes it a universal product that can be installed on all types of sub floors above, below or on grade. Engineered wood is the most common type of wood flooring used globally. Amongst many eco-friendly flooring alternatives, wood flooring stand as a profound choice. This type of flooring is designed from the accretion of plywood, a hardwood core and an external layer of hardwood veneer typically 2-3 mm. The external layer imparts a natural finish to the flooring since natural hardwood coating looks more authentic than a mere photographic layer.

- Multi layered structure makes it dimensionally stronger.
- Versatile, can be used for both traditional & modern settings.
- UV Acrylic with anti scratch top coat with protects the surface.

Engineered



Cherish Walnut



WOODEN
FLOORING

ENGINEERED

Product Details :

Code Nos. & Name	Thick. (mm)	Dimension	No. of Planks	Sq.ft.	Page No.
American Walnut	15	2100mm x 135mm	6	18.31	33
Cherish Walnut	15	2100mm x 135mm	6	18.31	34
Roasted Walnut - 3 Strip	15	2420mm x 195mm	6	30.47	35
Sydney Oak	15	2100mm x 135mm	6	18.31	36
Dusty Oak	15	2100mm x 135mm	6	18.31	37
Austrian Oak	15	2100mm x 135mm	6	18.31	38
Myrtle Oak	15	2100mm x 135mm	6	18.31	39



Sydney Oak



American Walnut

2100mm x 135mm x 15mm



2100mm x 135mm x 15mm

Cherish Walnut



Roasted Walnut

2420mm x 195mm x 15mm



2100mm x 135mm x 15mm

Sydney Oak



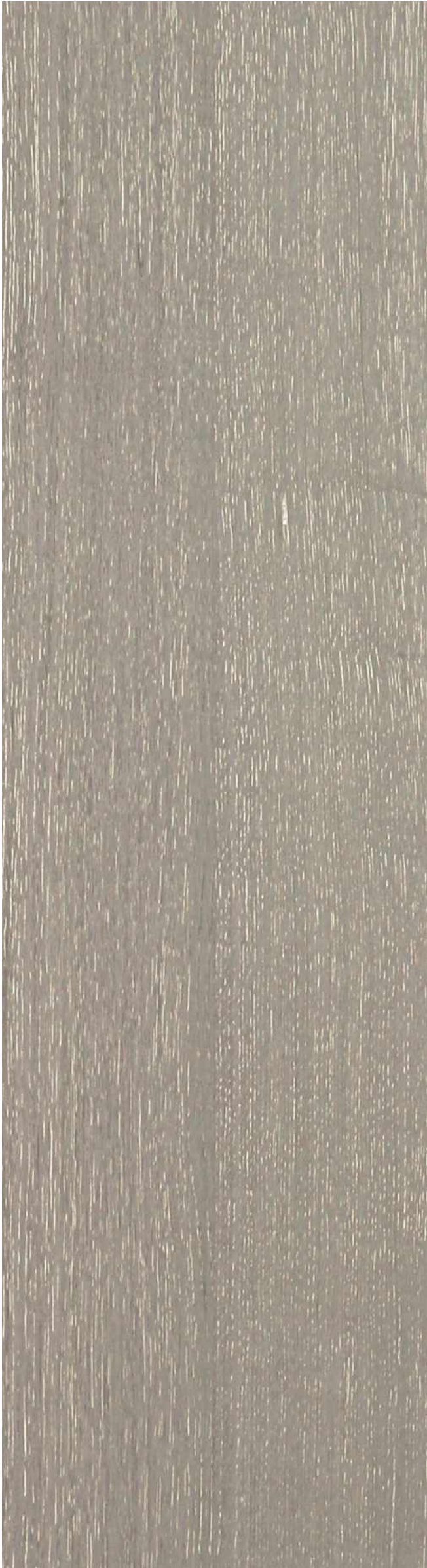
Dusty Oak

2100mm x 135mm x 15mm



2100mm x 135mm x 15mm

Austrian Oak



Myrtle Oak

2100mm x 135mm x 15mm



Roasted Walnut



KAINDL VENEER

KAINDL flooring from Austria, Europe. 100 years of tradition, 100 years of innovation: which began as a small sawmill in 1897 has grown into a global player in the field of flooring & interior design. With plants and high-tech installations that set new standards in the wood-processing industry. For EURO it's a gratification to be a part of KAINDL to market & sell their products in INDIA exclusively.



Oak Urban



KAINDL VENEER

Product Details :

Code Nos. & Name	Thick. (mm)	Dimension	No. of Planks	Sq.ft.	Page No.
Mahogany Fries	10.5	1383mm x 159mm	9	21.31	43
Oak Volcano	10.5	1383mm x 159mm	9	21.31	44
IPE - Tobacco	10.5	1383mm x 159mm	9	21.31	45
Jatoba	10.5	1383mm x 159mm	9	21.31	46
Sucupira	10.5	1383mm x 159mm	9	21.31	47
Teak Monaz	10.5	1383mm x 159mm	9	21.31	48
Walnut Salon	10.5	1383mm x 159mm	9	21.31	49
Oak Urban	10.5	1383mm x 159mm	9	21.31	50
Oak Karot	10.5	1383mm x 159mm	9	21.31	51

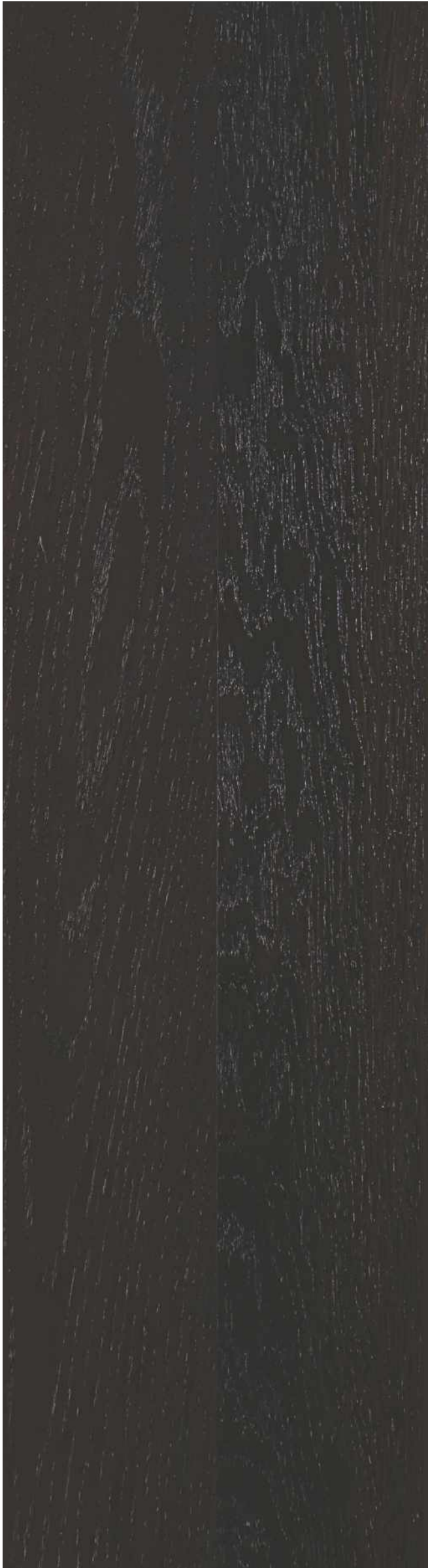


Teak Monaz



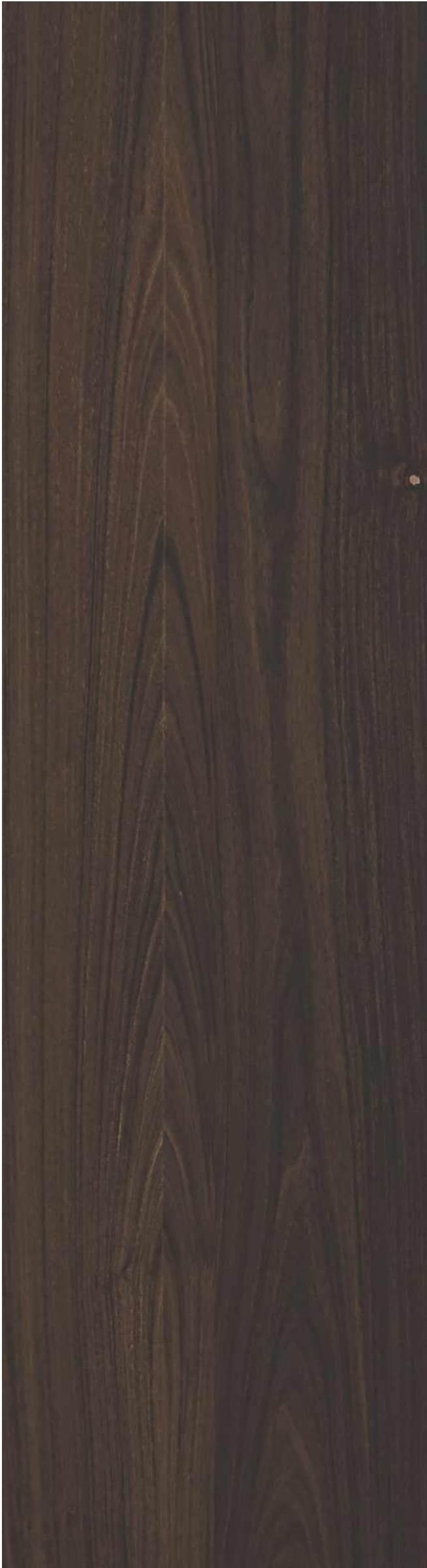
Mahogany Fries

1383mm x 159mm x 10.5mm



1383mm x 159mm x 10.5mm

Oak Volcano



IPE - Tobacco

1383mm x 159mm x 10.5mm



1383mm x 159mm x 10.5mm

Jatoba



Sucupira

1383mm x 159mm x 10.5mm



1383mm x 159mm x 10.5mm

Teak Monaz



Walnut Salon

1383mm x 159mm x 10.5mm



1383mm x 159mm x 10.5mm

Oak Urban



Oak Karot

1383mm x 159mm x 10.5mm



Walnut Salon



WOODEN FLOORING

LAMINATES FLOORING

Wood is considered as an environment friendly product that always has a classic appeal. Exuding warmth and comfort, wood flooring has become a natural choice for flooring for homes, galleries, office & showrooms. Euro Laminated Flooring offers the look of hardwood flooring, with nominal expense and less maintenance.

Euro Laminated flooring is usually made from High Density Fibres, with a decor overlay that is designed to look like wood. A clear aluminium-di-oxide layer is placed on top, thus increasing its durability. Laminate flooring has become a popular way to enhance the look of a house.

Product Details :

Code Nos. & Name	Thick. (mm)	Dimension	No. of Planks	Grade	Sq.ft.	Page No.
EMPRESS - 300 Series						
BL302 Scarlett Merbau	8	1215mm x 195mm 3 Strip	8	AC3	20.40	55
BL303 Perigold Teak	8	1215mm x 195mm 1 Strip	8	AC3	20.40	56
BL304 Panama Teak	8	1215mm x 195mm 1 Strip	8	AC3	20.40	57
BL306 Wild Oak	8	1215mm x 195mm 1 Strip	8	AC3	20.40	58
BL308 American Walnut	8	1215mm x 195mm 1 Strip	8	AC3	20.40	59
BL309 Montana Walnut	8	1215mm x 195mm 1 Strip	8	AC3	20.40	60
BL310 Panga Panga	8	1215mm x 195mm 2 Strip	8	AC3	20.40	61
EMPRESS - 400 Series						
BL401 Euro Oak	8	1215mm x 195mm 1 Strip	8	AC4	20.40	62
BL402 Knotty Maple	8	1215mm x 195mm 1 Strip	8	AC4	20.40	63
BL403 Makatta	8	1215mm x 195mm 2 Strip	8	AC4	20.40	64
BL404 Golden Teak	8	1215mm x 195mm 1 Strip	8	AC4	20.40	65
BL405 Thai Lumpaw	8	1215mm x 195mm 1 Strip	8	AC4	20.40	66
BL406 Zericotta	8	1215mm x 195mm 2 Strip	8	AC4	20.40	67
BL407 Prime Walnut	8	1215mm x 195mm 1 Strip	8	AC4	20.40	68
BL408 Gabanese Wenge	8	1215mm x 195mm 2 Strip	8	AC4	20.40	69
BL409 Turkish Cherry	8	1215mm x 195mm 1 Strip	8	AC4	20.40	70
BL410 Asian Walnut	8	1215mm x 195mm 1 Strip	8	AC4	20.40	71
BL411 Ecuador Ebony	8	1215mm x 195mm 1 Strip	8	AC4	20.40	72
BL412 Indian Rosewood	8	1215mm x 19 mm 1 Strip	8	AC4	20.40	73
ELEGANCE - 500 Series						
BL502 Antique Brown	8	1215mm x 195mm 1 Strip	8	Ac4	20.40	74
BL503 Chest Nut	8	1215mm x 195mm 1 Strip	8	AC4	20.40	75
BL504 Ancient Cedar	8	1215mm x 195mm 1 Strip	8	AC4	20.40	76
BL505 Pine Heart	8	1215mm x 195mm 1 Strip	8	AC4	20.40	77
BL506 Santos Mahogany	8	1215mm x 195mm 1 Strip	8	AC4	20.40	78
BL507 Brazilian Teak	8	1215mm x 195mm 1 Strip	8	AC4	20.40	79
BL508 Belgian Ebony	8	1215mm x 195mm 1 Strip	8	AC4	20.40	80
BL512 Palisander	8	1215mm x 195mm 1 Strip	8	AC4	20.40	81
ELEGANCE 600 Series						
BL602 Wenge	8	1215mm x 195mm 1 Strip	8	-	20.40	82
BL603 Cano Oak	8	1215mm x 195mm 1 Strip	8	-	20.40	83
Kaindl - Classic Touch 7.0 Standard Plank						
3709 Oak Siena	7	1383mm x 193mm 1 Strip	10	AC3	28.74	84
34054 Hickory Varena	7	1383mm x 193mm 1 Strip	10	AC3	28.74	85
37528 Oak Trevi	7	1383mm x 193mm 3 Strip	10	AC3	28.74	86
37652 Walnut Empoli	7	1383mm x 193mm 3 Strip	10	AC3	28.74	87
37671 Acacia Tramonti	7	1383mm x 193mm 2 Strip	10	AC3	28.74	88
Kaindl - Classic Touch 8.0 Standard Plank						
34242 Oak Orlando	8	1383mm x 193mm 1 Strip	9	AC4	25.83	89
37195 Oak Petrona	8	1383mm x 193mm 2 Strip	9	AC4	25.83	90
37218 Oak Aliano	8	1383mm x 193mm 3 Strip	9	AC4	25.83	91
37345 Oak Brione	8	1383mm x 193mm 1 Strip	9	AC4	25.83	92
37503 Walnut Limana	8	1383mm x 193mm 2 Strip	9	AC4	25.83	93
37526 Oak Rosarno	8	1383mm x 193mm 1 Strip	9	AC4	25.83	94
37527 Oak Silea	8	1383mm x 193mm 1 Strip	9	AC4	25.83	95
37553 Oak Martone	8	1383mm x 193mm 1 Strip	9	AC4	25.83	96
37847 Oak Satriano	8	1383mm x 193mm 1 Strip	9	AC4	25.83	97

Continue...



WOODEN FLOORING

LAMINATES FLOORING

Product Details :

Code Nos. & Name	Thick. (mm)	Dimension	No. of Planks	Grade	Sq.ft.	Page No.
Kaindl - Classic Touch 8.0 Standard Plank with 4-sided Microbevel						
K4367 Walnut Sabo	8	1383mm x 193mm 1 Strip	9	AC4	25.86	119
Kaindl - Classic Touch 8.0 Premium Plank						
34021 Oak Levate	8	1383mm x 159mm 1 Strip	10	AC4	23.68	98
34134 Hickory Mirano	8	1383mm x 159mm 1 Strip	10	AC4	23.68	99
34308 Pine Kodiak	8	1383mm x 159mm 1 Strip	10	AC4	23.68	100
38058 Hickory Soave	8	1383mm x 159mm 1 Strip	10	AC4	23.68	101
K4376 Pine Grizzly	8	1383mm x 159mm 1 Strip	10	AC4	23.68	102
K4377 Teak Walaba	8	1383mm x 159mm 1 Strip	10	AC4	23.68	103
K4383 Walnut Fresco Root	8	1383mm x 159mm 1 Strip	10	AC4	23.68	104
Kaindl - Natural Touch 10.0 Premium Plank						
34029 Hickory Valley	10	1383mm x 159mm 1 Strip	8	AC4	18.94	105
K4358 Oak Merado	10	1383mm x 159mm 1 Strip	8	AC4	18.94	106
K4380 Hemlock Barnwood Anco	10	1383mm x 159mm 1 Strip	8	AC4	18.94	107
Kaindl - Natural Touch 10.0 Narrow Plank						
34074 Hickory Georgia	10	1383mm x 116mm 1 Strip	8	AC4	13.78	108
37581 Wenge Aurora	10	1383mm x 116mm 1 Strip	8	AC4	13.78	109
37658 Walnut Newport	10	1383mm x 116mm 1 Strip	8	AC4	13.78	110
37689 Walnut Reno	10	1383mm x 116mm 1 Strip	8	AC4	13.78	111
Kaindl - Natural Touch 8.0 Standard Plank 3 in 1						
K4360 Oak Farco Urban	8	1383mm x 193mm	9	-	25.86	112
K4361 Oak Farco Trend	8	1383mm x 193mm	9	-	25.86	113
K4362 Oak Farco Elegance	8	1383mm x 193mm	9	-	25.86	114
K4363 Oak Farco Cogoy	8	1383mm x 193mm	9	-	25.86	115
K4364 Oak Farco Colo	8	1383mm x 193mm	9	-	25.86	116
K4365 Pine Farco Spirit	8	1383mm x 193mm	9	-	25.86	117
K4366 Pine Farco Vivid	8	1383mm x 193mm	9	-	25.86	118
Kaindl - Creative Special 8.0						
P80381Oak Sunrise	8	1383mm x 159mm	10	AC4	23.68	124
Kaindl - Natural Touch 8.0 Wide Plank FISH bone						
K4378 Oak Fortress Rochesta	8	1383mm x 244mm	7	AC4	29.06	120
K4379 Oak Fortress Ashford	8	1383mm x 244mm	7	AC4	29.06	121
Kaindl - Natural Touch 10.0 Premium Plank Endgrains						
K4381 Oak Fresco Lodge	10	1383mm x 159mm	8	AC4	18.94	122
K4382 Oak Fresco Bark	10	1383mm x 159mm	8	AC4	18.94	123
Kaindl - Classic touch 8.0 Wide Plank						
44374	8	1383mm x 244mm	7	-	25.43	125
44375	8	1383mm x 244mm	7	-	25.43	126

Note: Elegance AC4-500 Series & Elegance-600 Series available with 2mm Sound Pad



BL 503 Chest Nut



BL 302 Scarlett Merbau

1215mm x 195mm x 8mm - AC3



1215mm x 195mm x 8mm - AC3

BL 303 Perigold Teak



BL 304 Panama Teak

1215mm x 195mm x 8mm - AC3



1215mm x 195mm x 8mm - AC3

BL 306 Wild Oak



BL 308 American Walnut

1215mm x 195mm x 8mm - AC3



1215mm x 195mm x 8mm - AC3

BL 309 Montana Walnut



BL 310 Panga Panga

1215mm x 195mm x 8mm - AC3



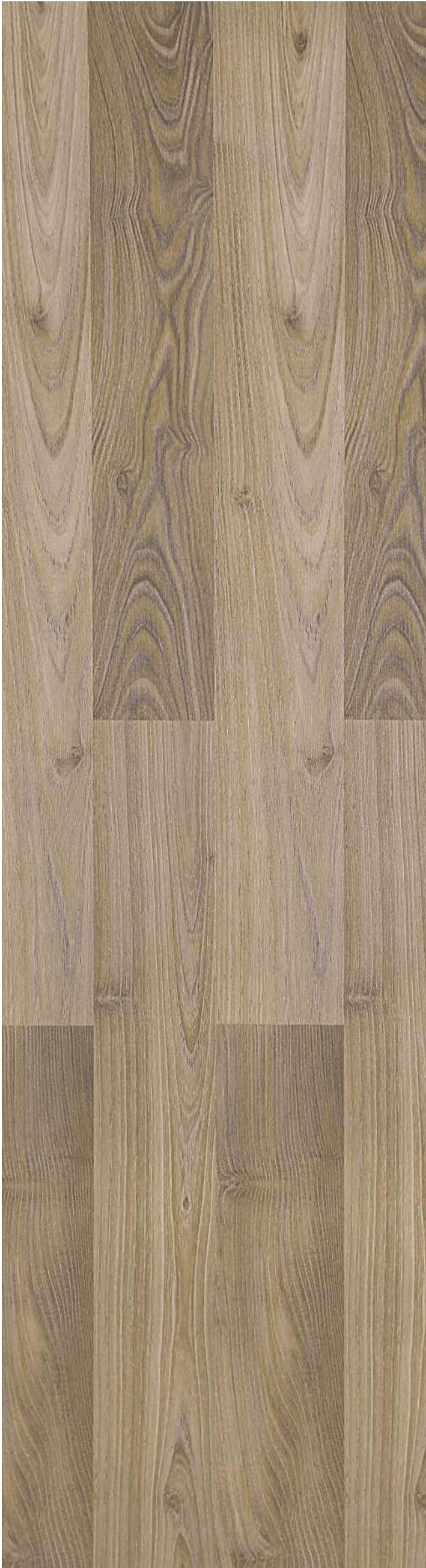
1215mm x 195mm x 8mm - AC4

BL 401 Euro Oak



BL 402 Knotty Maple

1215mm x 195mm x 8mm - AC4



1215mm x 195mm x 8mm - AC4

BL 403 Makatta



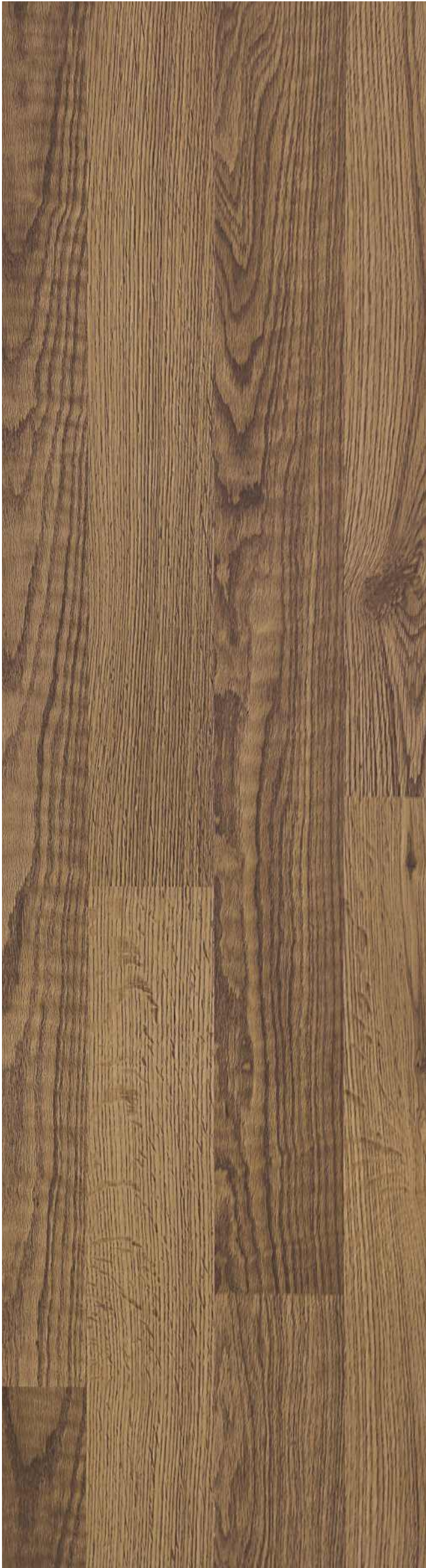
BL 404 Golden Teak

1215mm x 195mm x 8mm - AC4



1215mm x 195mm x 8mm - AC4

BL 405 Thai Lumpaw



BL 406 Zericotta

1215mm x 195mm x 8mm - AC4



1215mm x 195mm x 8mm - AC4

BL 407 Prime Walnut



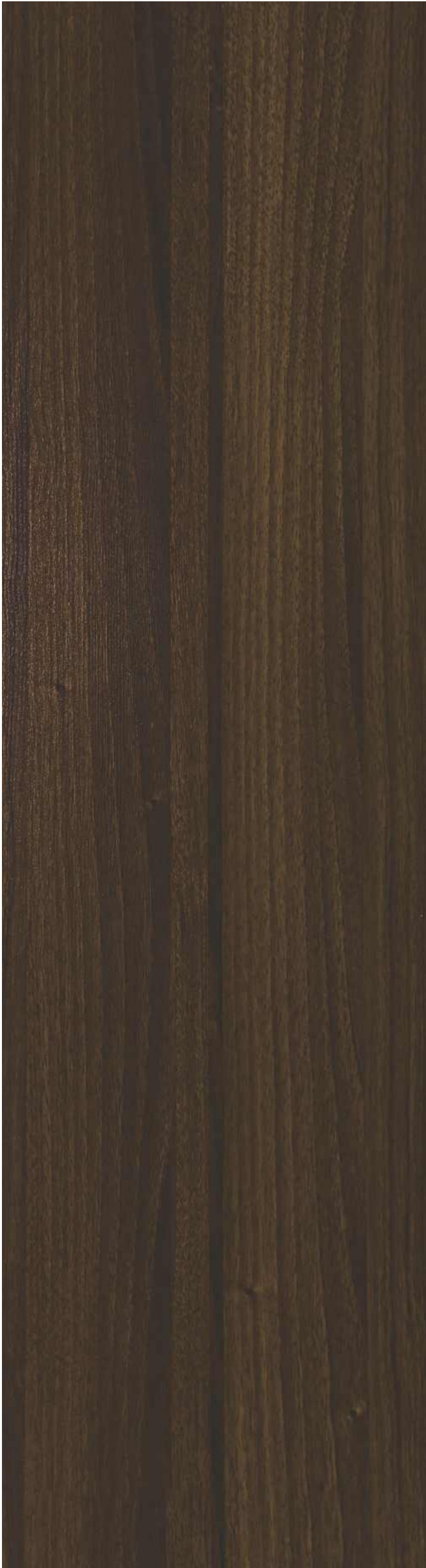
BL 408 Gabanese Wenge

1215mm x 195mm x 8mm - AC4



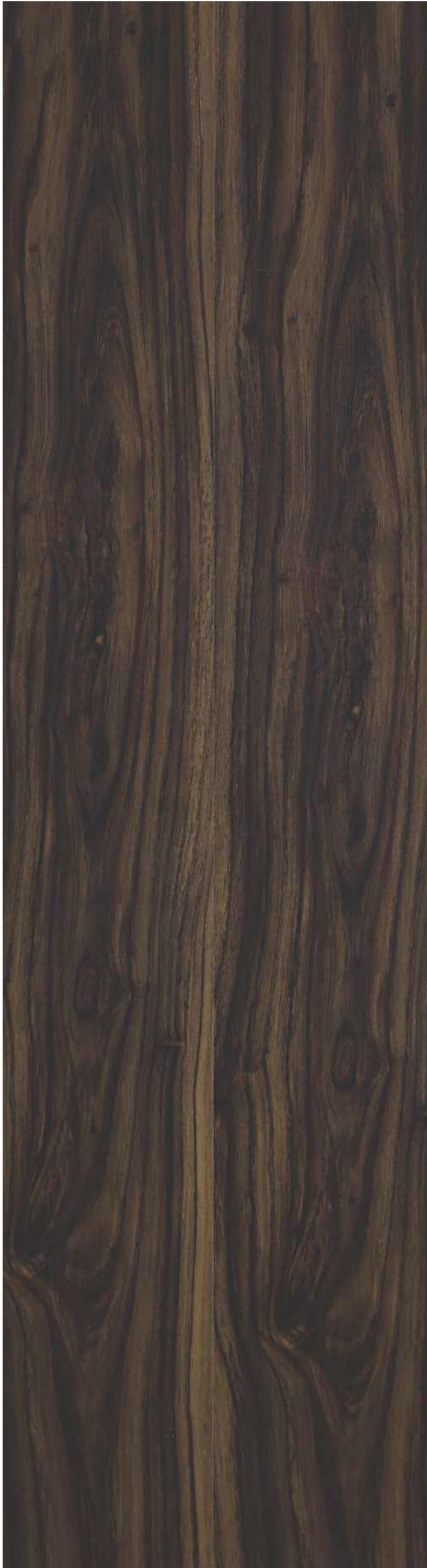
1215mm x 195mm x 8mm - AC4

BL 409 Turkish Cherry



BL 410 Asian Walnut

1215mm x 195mm x 8mm - AC4



1215mm x 195mm x 8mm - AC4

BL 411 Ecuador Ebony

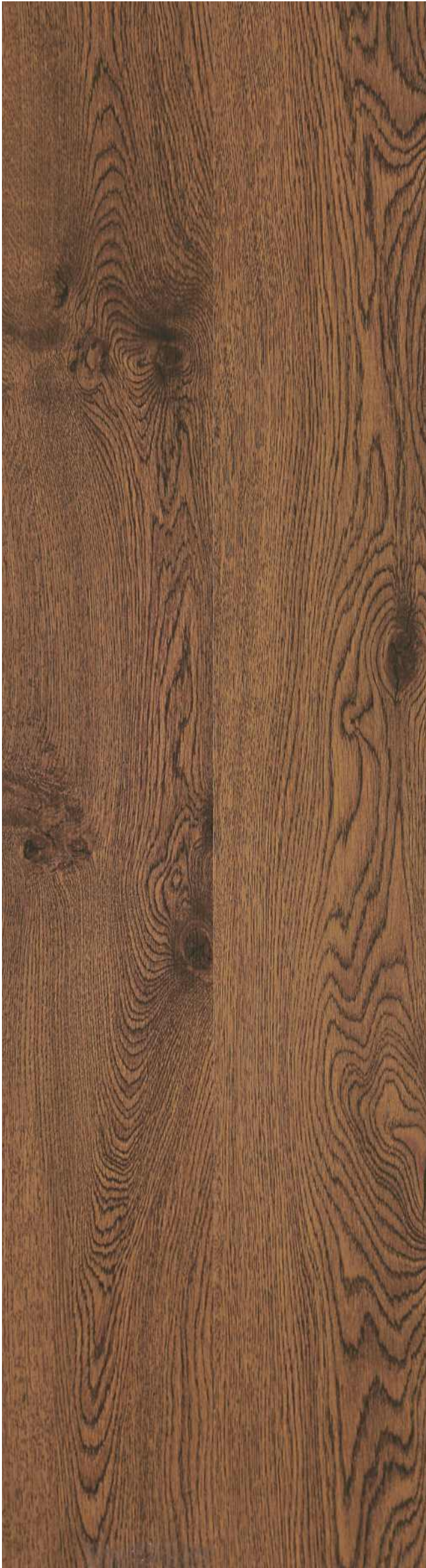


BL 412 Indian Rosewood

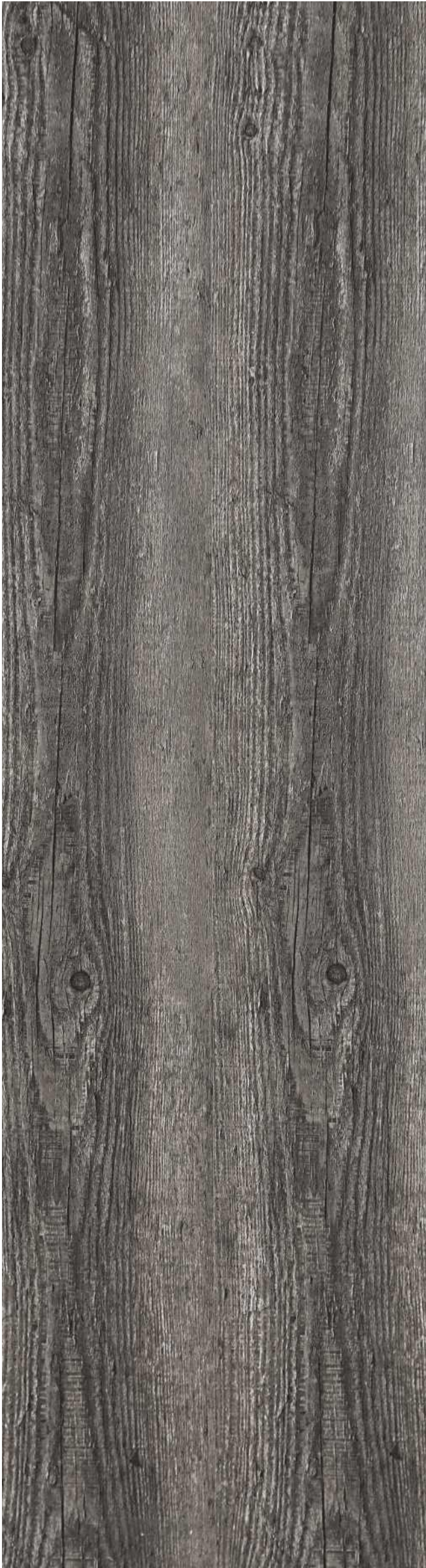
1215mm x 195mm x 8mm - AC4



1215mm x 195mm x 8 + 2mm (with sound pad) - AC4 **BL 502 Antique Brown**



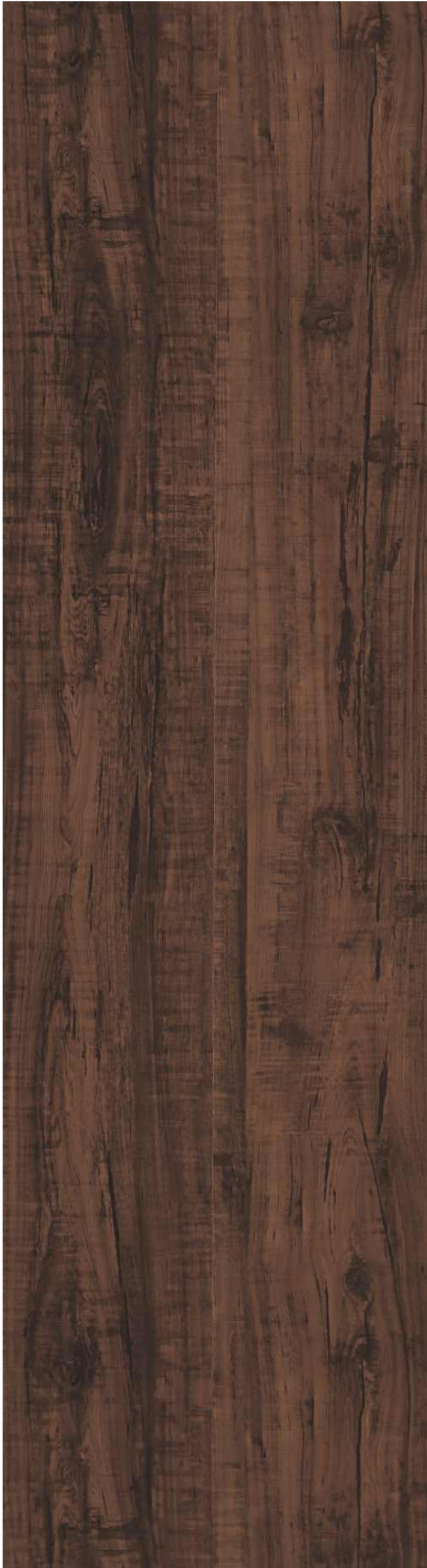
BL 503 Chest Nut 1215mm x 195mm x 8 + 2mm (with sound pad) - AC4



1215mm x 195mm x 8 + 2mm (with sound pad) - AC4 **BL 504 Ancient Cedar**



BL 505 Pine Heart 1215mm x 195mm x 8 + 2mm (with sound pad) - AC4



1215mm x 195mm x 8 + 2mm (with sound pad) - AC4 **BL 506 Santos Mahogany**



BL 507 Brazilian Teak 1215mm x 195mm x 8 + 2mm (with sound pad) - AC4



1215mm x 195mm x 8 + 2mm (with sound pad) - AC4 **BL 508 Belgian Ebony**



BL 512 Palisander 1215mm x 195mm x 8 + 2mm (with sound pad) - AC4



1215mm x 195mm x 8 + 2mm (with sound pad) - AC4

BL 602 Wenge



BL 603 Cano Oak 1215mm x 195mm x 8 + 2mm (with sound pad) - AC4



1383mm x 193mm x 7mm - AC

3709 Oak SIENA



34054 Hickory VARENA

1383mm x 193mm x 7mm - AC3



1383mm x 193mm x 7mm - AC3

37528 Oak TREVI



37652 Walnut EMPOLI

1383mm x 193mm x 7mm - AC3



1383mm x 193mm x 7mm - AC3

37671 Acacia TRAMONTI



34242 Oak ORLANDO

1383mm x 193mm x 8mm - AC4



1383mm x 193mm x 8mm - AC4

37195 Oak PETRONA



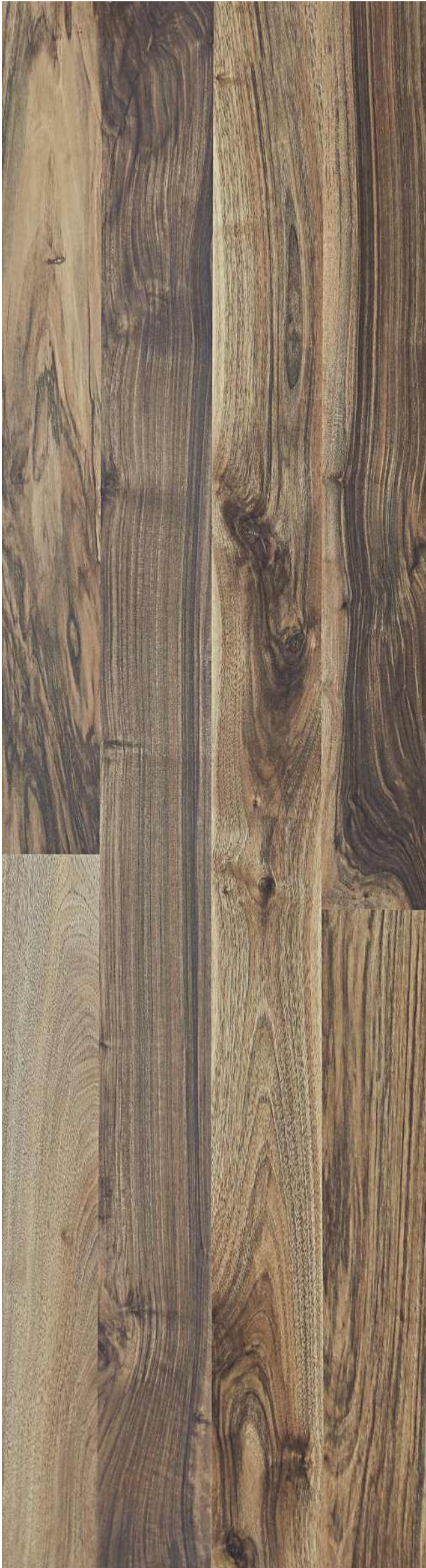
37218 Oak ALIANO

1383mm x 193mm x 8mm - AC4



1383mm x 193mm x 8mm - AC4

37345 Oak BRIONE



37503 Walnut LIMANA

1383mm x 193mm x 8mm - AC4



1383mm x 193mm x 8mm - AC4

37526 Oak ROSARNO



37527 Oak SILEA

1383mm x 193mm x 8mm - AC4



1383mm x 193mm x 8mm - AC4

37553 Oak MARTONE



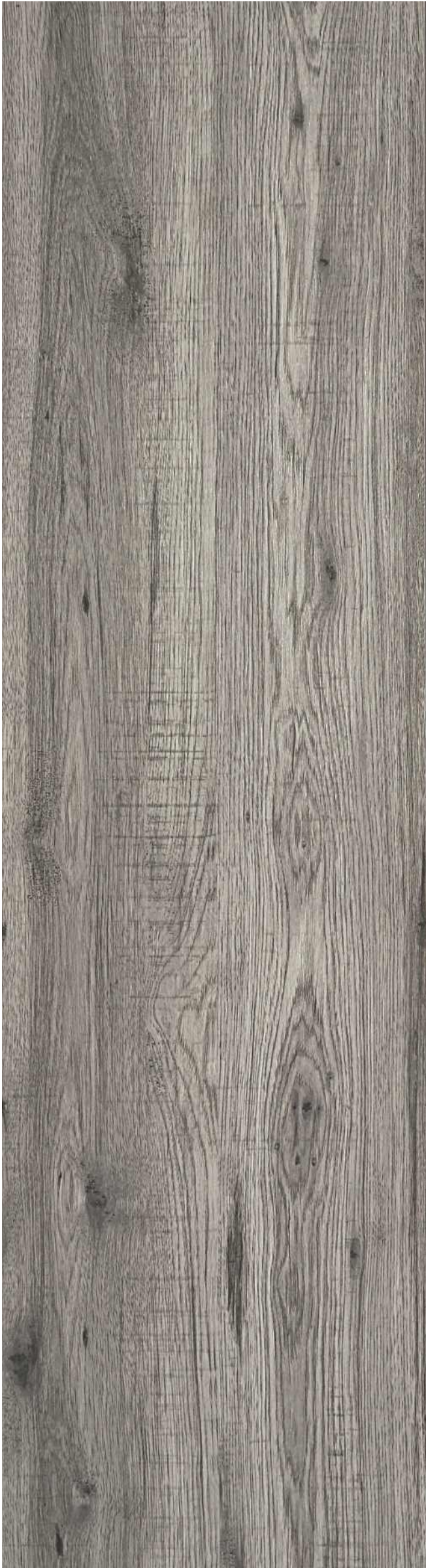
37847 Oak SATRIANO

1383mm x 193mm x 8mm - AC4



1383mm x 159mm x 8mm - AC4

34021 Oak LEVATE



34134 Hickory MIRANO

1383mm x 159mm x 8mm - AC4



1383mm x 159mm x 8mm - AC4

34308 Pine KODIAK



38058 Hickory SOAVE

1383mm x 159mm x 8mm - AC4



1383mm x 159mm x 8mm - AC4

K4376 Pine GRIZZLY



K4377 Teak WALABA

1383mm x 159mm x 8mm - AC4



1383mm x 159mm x 8mm - AC4

K4383



34029

1383mm x 159mm x 10mm - AC4



1383mm x 159mm x 10mm - AC4

K4358



K4380

1383mm x 159mm x 10mm - AC4



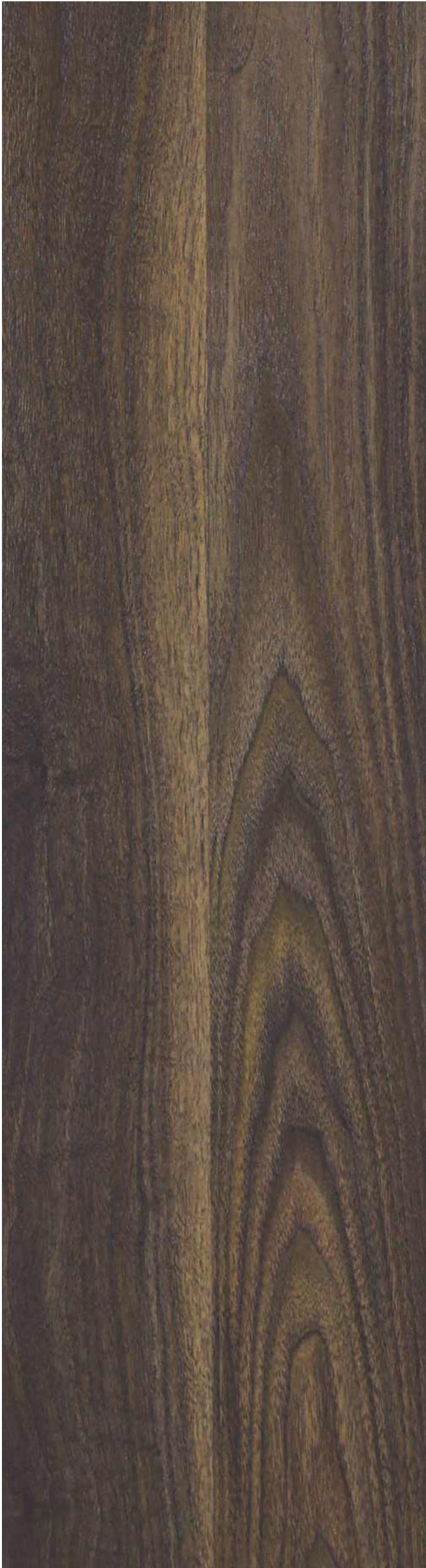
1383mm x 116mm x 10mm - AC4

34074



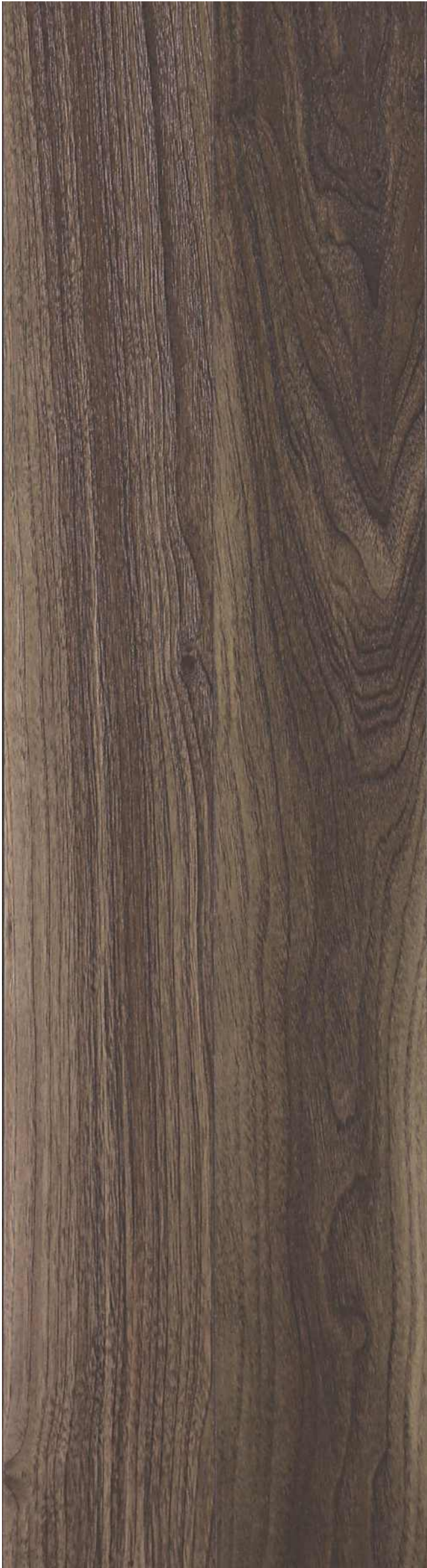
37581

1383mm x 116mm x 10mm - AC4



1383mm x 116mm x 10mm - AC4

37658



37689

1383mm x 116mm x 10mm - AC4



1383mm x 193mm x 8mm

K4360



K4361

1383mm x 193mm x 8mm



1383mm x 193mm x 8mm

K4362



K4363

1383mm x 193mm x 8mm



1383mm x 193mm x 8mm

K4364



K4365

1383mm x 193mm x 8mm



1383mm x 193mm x 8mm

K4366



K4367

1383mm x 193mm x 8mm - AC4



1383mm x 244mm x 8mm

K4378



K4379

1383mm x 244mm x 8mm



1383mm x 159mm x 10mm

K4381



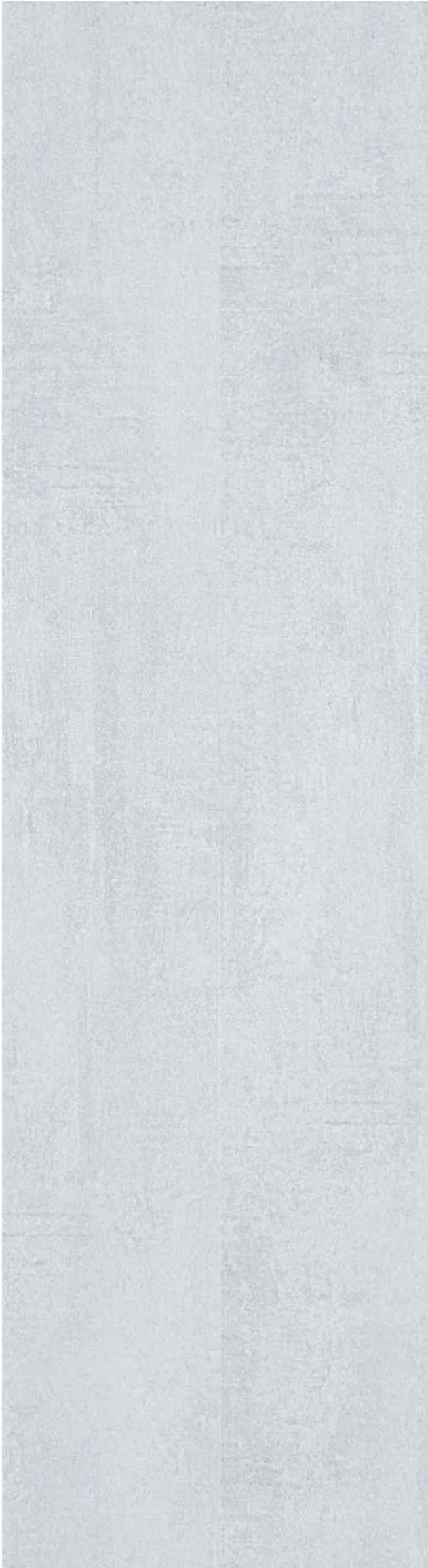
K4382

1383mm x 159mm x 10mm



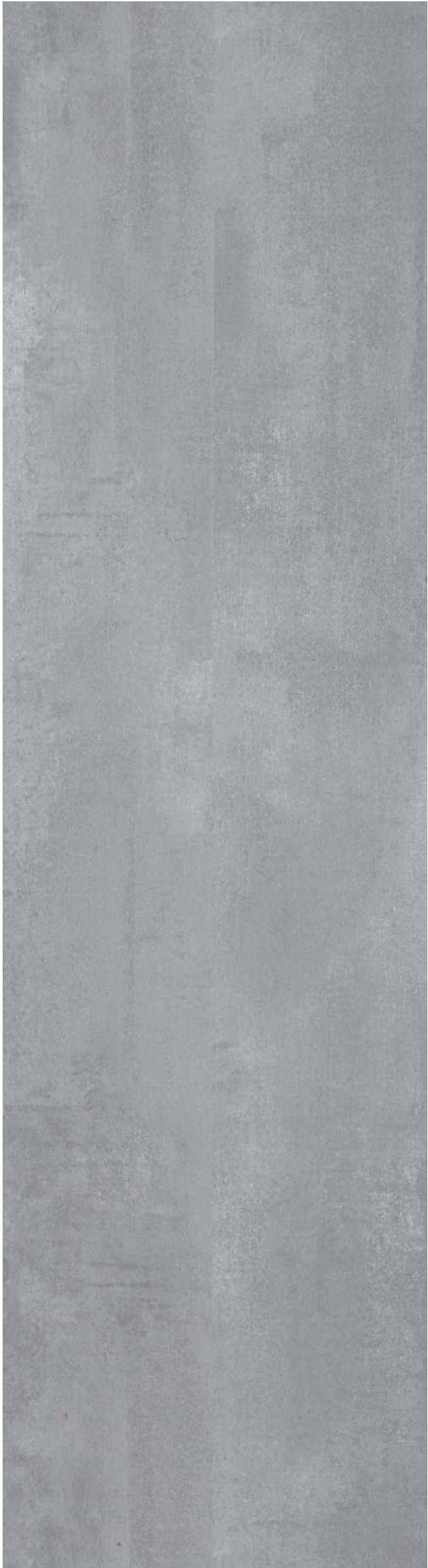
1383mm x 159mm x 8mm

P80381



44374

1383mm x 244mm x 8mm



1383mm x 244mm x 8mm

44375



WOODEN
FLOORING

Exterior Deck Tile

- Provides extreme insect resistance.
- Stays cool because it does not retain heat.
- Repel wood rot & decay.
- Holds up under extreme traffic & heavy use.
- Resists mold & fungus.
- Outlasts composite materials.
- Resists scratches.
- Has increased slip resistance.



WPC Deck Tile



WOODEN
FLOORING

Exterior Deck Tile



IPE Deck Tile



Solar Deck Tile

Dim. : 1' X 1'



IPE Deck Tile

Dim. : 1' X 1'



Teak Deck Tile

Dim. : 1' X 1'



WPC Deck Tile

Dim. : 1' X 1'



SOLID WOOD FLOORING					
Code Nos. & Name	Thick. (mm)	Dimension	No. of Planks	Sq.ft.	Page No.
American Walnut	18	RL (300-1200) x 93mm	–	21.62	05
		RL (300-1200) x 123mm	–	19.07	
Burma Teak	18	RL (300-850) x 93mm	–	21.62	06
		RL (300-850) x 123mm	–	19.07	
Indonesian Teak	18	RL (300-1300) x 91mm	–	22.22	07
Garapa	18	RL (300-1200) x 123mm	–	19.07	08
Jatoba	18	910 mm x 124mm	12	14.58	09
Merbau	18	910 mm x 125mm	12	14.69	10
Okan	18	910 mm x 120mm	16	18.81	11
Tava (Taun)	18	910 mm x 90mm	14	12.34	12
Natural Oak	18	910 mm x 92mm	12	10.81	13
Walnut Oak	18	910 mm x 92mm	12	10.81	14
Tuscany Oak	18	910 mm x 92mm	12	10.81	15
ACACIA SOLID WOOD FLOORING					
Mariosousa Dusk	18	910 mm x 120mm	16	18.81	16
Senegalia Teak	18	910 mm x 120mm	16	18.81	17
Vachelia Golden Teak	18	910 mm x 120mm	16	18.81	18
Wattle Walnut	18	910 mm x 120mm	16	18.81	19
BAMBOO FLOORING					
Bamboo Carbonised Horizontal	14	–	6	23.80	23
Bamboo Earth	14	1850mm x 125mm	6	14.96	24
Bamboo Bambosa	14	1850mm x 125mm	6	14.96	25
Bamboo Walnut	14	1850mm x 125mm	6	14.96	26
Bamboo Snow	14	1850mm x 125mm	6	14.96	27
Bamboo Lava	14	1850mm x 125mm	6	14.96	28
Bamboo Silver Grey	14	1850mm x 125mm	6	14.96	29
ENGINEERED FLOORING					
American Walnut	15	2100mm x 135mm	6	18.31	33
Cherish Walnut	15	2100mm x 135mm	6	18.31	34
Roasted Walnut - 3 Strip	15	2420mm x 195mm	6	30.47	35
Sydney Oak	15	2100mm x 135mm	6	18.31	36
Dusty Oak	15	2100mm x 135mm	6	18.31	37
Austrian Oak	15	2100mm x 135mm	6	18.31	38
Myrtle Oak	15	2100mm x 135mm	6	18.31	39
KAINDL VENEER FLOORING					
Mahogany Fries	10.5	1383mm x 159mm	9	21.31	43
Oak Volcano	10.5	1383mm x 159mm	9	21.31	44
IPE - Tobacco	10.5	1383mm x 159mm	9	21.31	45
Jatoba	10.5	1383mm x 159mm	9	21.31	46
Sucupira	10.5	1383mm x 159mm	9	21.31	47
Teak Monaz	10.5	1383mm x 159mm	9	21.31	48
Walnut Salon	10.5	1383mm x 159mm	9	21.31	49
Oak Urban	10.5	1383mm x 159mm	9	21.31	50
Oak Karot	10.5	1383mm x 159mm	9	21.31	51

LAMINATE FLOORING						
Code Nos. & Name	Thick. (mm)	Dimension	No. of Planks	Grade	Sq.ft.	Page No.
EMPRESS - 300 Series						
BL302 Scarlett Merbau	8	1215mm x 195mm 3 Strips	8	AC3	20.40	55
BL303 Perigold Teak	8	1215mm x 195mm 1 Strip	8	AC3	20.40	56
BL304 Panama Teak	8	1215mm x 195mm 1 Strip	8	AC3	20.40	57
BL306 Wild Oak	8	1215mm x 195mm 1 Strip	8	AC3	20.40	58
BL308 American Walnut	8	1215mm x 195mm 1 Strip	8	AC3	20.40	59
BL309 Montana Walnut	8	1215mm x 195mm 1 Strip	8	AC3	20.40	60
BL310 Panga Panga	8	1215mm x 195mm 2 Strips	8	AC3	20.40	61
EMPRESS - 400 Series						
BL401 Euro Oak	8	1215mm x 195mm 1 Strip	8	AC4	20.40	62
BL402 Knotty Maple	8	1215mm x 195mm 1 Strip	8	AC4	20.40	63
BL403 Makatta	8	1215mm x 195mm 2 Strips	8	AC4	20.40	64
BL404 Golden Teak	8	1215mm x 195mm 1 Strip	8	AC4	20.40	65
BL405 Thai Lumpaw	8	1215mm x 195mm 1 Strip	8	AC4	20.40	66
BL406 Zericotta	8	1215mm x 195mm 2 Strips	8	AC4	20.40	67
BL407 Prime Walnut	8	1215mm x 195mm 1 Strip	8	AC4	20.40	68
BL408 Gabanese Wenge	8	1215mm x 195mm 2 Strips	8	AC4	20.40	69
BL409 Turkish Cherry	8	1215mm x 195mm 1 Strip	8	AC4	20.40	70
BL410 Asian Walnut	8	1215mm x 195mm 1 Strip	8	AC4	20.40	71
BL411 Ecuador Ebony	8	1215mm x 195mm 1 Strip	8	AC4	20.40	72
BL412 Indian Rosewood	8	1215mm x 195mm 1 Strip	8	AC4	20.40	73

LAMINATE FLOORING							
Code Nos. & Name	Thick. (mm)	Dimension	No. of Planks	Grade	Sq.ft.	Page No.	
ELEGANCE - 500 Series							
BL502	Antique Brown	8	1215mm x 195mm 1 Strip	8	AC4	20.40	74
BL503	Chest Nut	8	1215mm x 195mm 1 Strip	8	AC4	20.40	75
BL504	Ancient Cedar	8	1215mm x 195mm 1 Strip	8	AC4	20.40	76
BL505	Pine Heart	8	1215mm x 195mm 1 Strip	8	AC4	20.40	77
BL506	Santos Mahogany	8	1215mm x 195mm 1 Strip	8	AC4	20.40	78
BL507	Brazilian Teak	8	1215mm x 195mm 1 Strip	8	AC4	20.40	79
BL508	Belgian Ebony	8	1215mm x 195mm 1 Strip	8	AC4	20.40	80
BL512	Palisander	8	1215mm x 195mm 1 Strip	8	AC4	20.40	81
ELEGANCE 600 Series							
BL602	Wenge	8	1215mm x 195mm 1 Strip	8	AC4	20.40	82
BL603	Cano Oak	8	1215mm x 195mm 1 Strip	8	AC4	20.40	83
Kaindl - Classic Touch 7.0 Standard Plank							
3709	Oak Siena	7	1383mm x 193mm 1 Strip	10	AC3	28.74	84
34054	Hickory Varena	7	1383mm x 193mm 1 Strip	10	AC3	28.74	85
37528	Oak Trevi	7	1383mm x 193mm 3 Strips	10	AC3	28.74	86
37652	Walnut Empoli	7	1383mm x 193mm 3 Strips	10	AC3	28.74	87
37671	Acacia Tramonti	7	1383mm x 193mm 2 Strips	10	AC3	28.74	88
Kaindl - Classic Touch 8.0 Standard Plank							
34242	Oak Orlando	8	1383mm x 193mm 1 Strip	9	AC4	25.83	89
37195	Oak Petrona	8	1383mm x 193mm 2 Strips	9	AC4	25.83	90
37218	Oak Aliano	8	1383mm x 193mm 3 Strips	9	AC4	25.83	91
37345	Oak Brione	8	1383mm x 193mm 1 Strip	9	AC4	25.83	92
37503	Walnut Limana	8	1383mm x 193mm 2 Strips	9	AC4	25.83	93
37526	Oak Rosarno	8	1383mm x 193mm 1 Strip	9	AC4	25.83	94
37527	Oak Silea	8	1383mm x 193mm 1 Strip	9	AC4	25.83	95
37553	Oak Martone	8	1383mm x 193mm 1 Strip	9	AC4	25.83	96
37847	Oak Satriano	8	1383mm x 193mm 1 Strip	9	AC4	25.83	97
Kaindl - Classic Touch 8.0 Standard Plank with 4-sided Microbevel							
K4367	Walnut Sabo	8	1383mm x 193mm 1 Strip	9	AC4	25.86	119
Kaindl - Classic Touch 8.0 Premium Plank							
34021	Oak Levate	8	1383mm x 159mm 1 Strip	10	AC4	23.68	98
34134	Hickory Mirano	8	1383mm x 159mm 1 Strip	10	AC4	23.68	99
34308	Pine Kodiak	8	1383mm x 159mm 1 Strip	10	AC4	23.68	100
38058	Hickory Soave	8	1383mm x 159mm 1 Strip	10	AC4	23.68	101
K4376	Pine Grizzly	8	1383mm x 159mm 1 Strip	10	AC4	23.68	102
K4377	Teak Walaba	8	1383mm x 159mm 1 Strip	10	AC4	23.68	103
K4383	Walnut Fresco Root	8	1383mm x 159mm 1 Strip	10	AC4	23.68	104
Kaindl - Natural Touch 10.0 Premium Plank							
34029	Hickory Valley	10	1383mm x 159mm 1 Strip	8	AC4	18.94	105
K4358	Oak Merado	10	1383mm x 159mm 1 Strip	8	AC4	18.94	106
K4380	Hemlock Barnwood Anco	10	1383mm x 159mm 1 Strip	8	AC4	18.94	107
Kaindl - Natural Touch 10.0 Narrow Plank							
34074	Hickory Georgia	10	1383mm x 116mm 1 Strip	8	AC4	13.78	108
37581	Wenge Aurora	10	1383mm x 116mm 1 Strip	8	AC4	13.78	109
37658	Walnut Newport	10	1383mm x 116mm 1 Strip	8	AC4	13.78	110
37689	Walnut Reno	10	1383mm x 116mm 1 Strip	8	AC4	13.78	111
Kaindl - Natural Touch 8.0 Standard Plank 3 in 1							
K4360	Oak Farco Urban	8	1383mm x 193mm	9	AC4	25.86	112
K4361	Oak Farco Trend	8	1383mm x 193mm	9	AC4	25.86	113
K4362	Oak Farco Elegance	8	1383mm x 193mm	9	AC4	25.86	114
K4363	Oak Farco Cogoy	8	1383mm x 193mm	9	AC4	25.86	115
K4364	Oak Farco Colo	8	1383mm x 193mm	9	AC4	25.86	116
K4365	Pine Farco Spirit	8	1383mm x 193mm	9	AC4	25.86	117
K4366	Pine Farco Vivid	8	1383mm x 193mm	9	AC4	25.86	118
Kaindl - Natural Touch 8.0 Wide Plank FISH bone							
K4378	Oak Fortress Rochesta	8	1383mm x 244mm	7	AC4	29.06	120
K4379	Oak Fortress Ashford	8	1383mm x 244mm	7	AC4	29.06	121
Kaindl - Natural Touch 10.0 Premium Plank Endgrains							
K4381	Oak Fresco Lodge	10	1383mm x 159mm	8	AC4	18.94	122
K4382	Oak Fresco Bark	10	1383mm x 159mm	8	AC4	18.94	123
Kaindl - Creative Special 8.0							
P80381	Oak Sunrise	8	1383mm x 159mm	10	AC4	23.68	124
Kaindl - Classic touch 8.0 Wide Plank							
44374		8	1383mm x 244mm	7	AC4	25.43	125
44375		8	1383mm x 244mm	7	AC4	25.43	126

Note: Elegance AC4-500 Series & Elegance-600 Series available with 2mm Sound Pad.

Exterior Dec Tile					
Code Nos. & Name	Thick. (mm)	Dimension	No. of Planks	Sq.ft.	Page No.
Solar Deck Tile	-	1ft x 1ft	-	-	129
IPE Deck Tile	-	1ft x 1ft	-	-	129
Teak Deck Tile	-	1ft x 1ft	-	-	129
WPC Deck Tile	-	1ft x 1ft	-	-	129
WPC Plank	-	1ft x 1ft	-	-	-
IPE Plank - Random Length	-	1ft x 1ft	-	-	-
IPE Plank - Fixed Length	-	1ft x 1ft	-	-	-

Advanced technology and innovative finishing makes your EURO floor easy to clean maintain, adding years to your floor. Here are few mandatory instructions that will allow your EURO floor to preserve its wonderful qualities for many years.

1. Use quality dirt-trapping doormats outside each entrance of your wooden flooring area to prevent dirt, sand, grit and other substances.
2. Certain types of casters on furniture may damage your EURO floor. Use protective pads under all furniture legs in order to erase their movements and prevent scratches and dents.
3. Never allow any liquid to remain on your EURO floor. Stains should be removed immediately while they are still wet. Regularly sweep or vacuum the floor to prevent grit or abrasive dust from accumulating and scratching the surface.
4. Wipe up any spills immediately with a clean dry cloth or paper towel. A moist cloth may be used to wipe up food spills or mud. Never use wax, oil-based detergent or any household cleaner. These may dull or damage the finish, leaving a greasy film.
5. Keep 'spike heels' shoes in good condition. Spike heels in disrepair may expose a metal tip that is harmful to your EURO Floor.
6. Close your curtains or blinds where extreme sunlight hits the floor. A combination of heat and sunlight may cause the flooring to fade or discolour.

FOR	USE
Rubber marks, scrapes or scuffs from shoe heels, dirt from the street, pencil or crayon marks.	A dust cloth.
Fruit, berries, milk, beer, wine, tea and soft drink spills.	An absorbent cloth or a damp cloth If it has already dried in.
Blood and urine stains.	A damp cloth.
Nail polish, shoe polish, varnish, ink, make up and pen stains.	A drop of acetone on a clean cloth.

Matching Profiles



Skirting: Used to covers the expansion gap between floor & wall.



Beading: Used to cover the expansion gap between furniture & Flooring. It is also used to cover the gap between wooden partition & the floors.



T Profile: Used as a threshold in doorways or as a transition strip where your wood floors meets floor or any other surface (i.e., carpet, tiles etc..) of similar height. T Profile can also be used to change the direction in which the floor is layed & to cover the expansion gap.



Stair Nose Profile: Used to cover the front edge of a stair tread or step. It also covers the expansion gap.

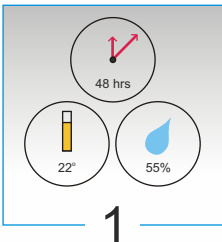


End Profile: Used to finish the floor at vertical surface such as exterior door thresholds, sliding glass doors, raised hearths, marble sills. It also covers the expansion gap.



Reducer Profile: Used as a transition from the height of the sub-floor to the height of your wood floor. It also covers the expansion gap.

Note : The Printed sample shown in this catalogue are only Indicative of the colour patterns & finishes available, it may differ from the actual sample.

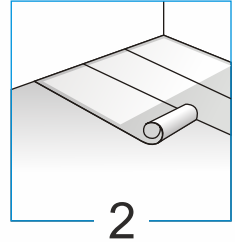


Step1: Preparation

Leave the planks to acclimatize for 48 hours in ready-paved room. The ideal room temperature is approx. 22° and the ideal air humidity approx. 55%.

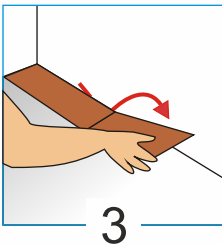
Step 2: Pave with damp-proof layer & foam

Clean and smoothen the sub floor, remove any grease; install the damp-proof layer; check the laminate planks for any damage.



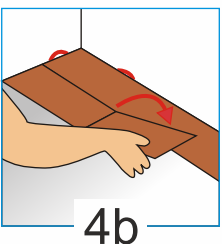
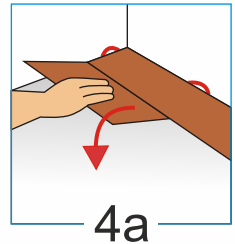
Step 3: The first row

Place a plank in the corner, with the long side of the tongue turned towards the wall. Make the shorter side of the tongue insert into the shorter side of notch of the first plank, and then turn it and connect with the first plank evenly. Complete the installation of the first row of planks following the above method. Remember that an 8 to 10mm expansion should be kept between the first row and the wall.



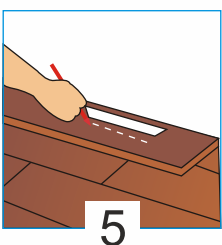
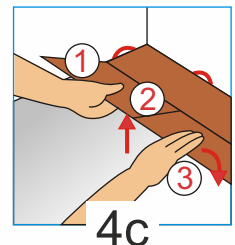
Step 4: The process of installation

Start the second row. Insert the longer tongue side of a plank into the notch of that of the previous row, and turn it downward and push it forward so as to ensure it can be connected with the previous row evenly.



Take another plank and insert its shorter tongue side into the shorter tongue side of the previous plank and push it downward against the previous row.

1. Carefully put this plank with the previous plank in the same row together, and turn around 30° together.
2. Push downward along the previous row of planks.
3. You can push it downwards only when the planks are totally connected.



Step 5: The final row

Once again, make sure there is an 8 to 10mm expansion joint. Cut off the redundant part of the last row.

Kaindl Laminate FLOORING 3 x Guarantee			Kaindl Info
15 years:	Kaindl Classic Touch	7.0	19
30 years:	Kaindl Classic Touch	8.0 10.0	
	Kaindl Natural Touch	8.0 10.0	
	Kaindl Soft Touch	8.0 10.0	

- Abrasion resistance
- Light fastness
- Resistance to staining

Conditions of Guarantee

Our guarantee is valid for all the above Kaindl Laminate floor coverings which have been laid in rooms where they are exposed to the normal wear for their recommended Use Category according to EN 685, but not in the event of unusual chemical or mechanical stress. The guarantee applies for the date of purchase onwards. For light commercial applications, the above structural and performance warranties are available for the "Kaindl Laminate FLOORING collection" products for 6 years from the date of purchase. The guarantee is not transferable; its terms apply to the first buyer only.

Floor Laying

Kaindl Laminate Flooring must be laid as described in the Kaindl Floor Laying Guide. You will find a copy of Kaindl Floor Laying Instructions in every third package; more detailed floor laying instructions are available on request from your local Kaindl dealer or via the Internet under www.kaindl.com

Treatment

Use of the flooring for other than the intended purpose will automatically result in a lapsing of the guarantee as well as failure to observe the instructions for the correct cleaning and care of the flooring. Cleaners used for commercial purposes, or mats or other suitable dirt-inhibiting facilities must be provided. Compliance with the Cleaning and Care Instructions (copy enclosed in every third package) is a precondition for claims under the guarantee. Depreciation through normal wear is not covered by the guarantee.

Abrasion resistance

A claim under the guarantee for abrasion defects will be justified if an area of at least one square centimetre of the colour has completely rubbed off. However, rub off defects restricted to the edges of the panels are not covered by the guarantee.

Light fastness

Light fastness according to Blue wool scale no. more than 6.

Kaindl Laminate FLOORING 3 x Guarantee			Kaindl Info
15 years:	Kaindl Classic Touch	7.0	19
30 years:	Kaindl Classic Touch	8.0 10.0	
	Kaindl Natural Touch	8.0 10.0	
	Kaindl Soft Touch	8.0 10.0	

Test method according to EN 20105. With the exception of natural ageing.

Resistance to staining

In the event of contamination with the following substances, including, but not limited to, industrial fruit and vegetable juices, fats, coffee, or alcohol, nail lacquer or similar products.

Claims

Any claim must be made in written form with all required details completed and the original sales receipt. The claim must be lodged within 30 days of the defect in question having become apparent. We reserve the right to inspect the defect ourselves, or to have it inspected by our authorised agents, before recognising any claim.

Compensation under Guarantee

All compensation under guarantee will be set off in proportion to the market value of the goods in question. Determination of the market value is on the basis of the guarantee period. The compensation payable in the case of:
 Kaindl Classic Touch: 7.0 reduces by 1/5 each 3 years of the original value.
 Kaindl Classic Touch: 8.0 reduces by 1/5 each 6 years of the original value.
 Kaindl Natural Touch: 8.0 reduces by 1/5 each 6 years of the original value.
 Kaindl Natural Touch: 10.0 reduces by 1/5 each 6 years of the original value.
 Kaindl Soft Touch: 8.0 reduces by 1/5 each 6 years of the original value.
 Kaindl Soft Touch: 10.0 reduces by 1/5 each 6 years of the original value.
 If the claim under guarantee is recognised, this is otherwise to be provided with the necessary replacement panels free of charge by the dealer from whom made the original sale. The costs of laying are to be borne by the customer; consequential losses and costs of any nature whatever are not covered by the guarantee. In the event of Kaindl Laminate Flooring not being available in the required colour, a selection will be made from the product range available at that time.

The guarantee is subject to the laws of Austria. The competent court in A-5020 Salzburg shall have the right of exclusive jurisdiction.

ENVIRONMENT AND DISPOSAL		Kaindl Info
		10
		100% Recycled 100% Recycled

I. The production of Kaindl Laminate and Real Wood Flooring

The carrier boards used in Kaindl Laminate and Real Wood Flooring are made of wood. For our HDF panels we use fast growing larch wood. The edges of the boards are cut off but are not seen anyway in the finished flooring and in joining the joints.

The bonding agents used are based on products which are free of formaldehyde and which can be disposed of without posing the environment. In addition, heavy metals, or cyanides, the aromatic hydrocarbons and the existing materials, carry out the strongest emission class EN 13959-2.

II. Emissions

Natural wood contains formaldehyde. Formaldehyde (chemical formula: HCHO) is made by the oxidation of methane and methanol and is used as a raw material in the chemical industry for the production of various plastics, lacquers and adhesives. Including those substances used in the wood processing industry. For assessment purposes in the context of the most serious and classified as different emission categories. Kaindl only produce carrier panels in the E1 emission category (0.1 ppm HCHO) which is less than 1 mg per m³.

However, such wood material is the emission assessment conducted on the market level. The gas analysis conducted for us by recognised test institutes, such as LGA (Leitungsprüfgesellschaft Bayern), the University of the German Research Federal States (LGA) in Vienna returns a value of 0.8 mg/m³ on 100 m³ per hour per 100 m² of the carrier board. This is well below the 1.0 mg/m³ according to EN 13959-2. Clearly, therefore, Kaindl Flooring is well within the class and legal requirements.

III. Health and Hygiene

Highly durable and wear-resistant coating films based on melamine-formaldehyde resin coatings protect and strengthen panels from abrasion and damage in kitchens, bathrooms, offices, and working areas in the home. High standards of hygiene are required, but the food processing industry and in medical institutions. The said melamine resin is the most stringent standard of hygiene, which is also applicable to the carrier board.

When used in Kaindl Laminate and Real Wood Flooring, the highly decorative surface properties compared with other types of floor coverings such as: ceramic tiles.

- by virtue of the needed smooth surfaces laminated floors are easy to keep clean and very hygienic.
- since our carrier boards permanently on such surfaces they do not present a suitable environment for the multiplication of bacteria and fungi. This is also, means, especially for persons allergic to mould spores.

Thus, by virtue of such health associations, Kaindl Laminate and Real Wood Flooring are also suitable for such sensitive environments in the form of the living room or children's rooms, and also in kindergartens.

ENVIRONMENT AND DISPOSAL		Kaindl Info
		10
		100% Recycled 100% Recycled

IV. Disposal

The carrier boards used in Kaindl Laminate and Real Wood Flooring after many years of service present no problem for the environment regardless of whether disposed of as waste by burning or by recycling. This material does not come into the category of special waste. In order to purchase the carrier boards, it is a technical specification for our carrier boards according to EN 13959-2 (EN 13959-2) Federal Government Regulation for Protection against Emission of Air Pollution, it is not to be sent to the public authority by means of and particularly not to those for the incineration of special waste materials for disposal.

As a wood-based material, Kaindl Flooring can now be recycled into fibre-based composite by any of various recycling processes developed by W&B Holztechnik-Wäring Group for wood. The material will result that more than 80% of the mass can be recycled for use in the production of chip and fibre panels.

V. Summary

Kaindl Laminate and Real Wood Flooring are a highly durable form of covering which offers the additional advantage of being hygienic, protective and eco-friendly. Such flooring are also the ideal solution for persons who have allergies and are for example sensitive to the formaldehyde being emitted from the carrier boards, and also for kindergartens. They do not release any emissions which could be harmful to health and their correct disposal is made either by burning or recycled (present) based on the EN 13959-2.

PROPERTIES OF HDF PANEL		Kaindl Info
		8
		100% Recycled 100% Recycled

Only recently has been in use as carrier panels since laminate flooring was first introduced. However, it is not yet the use of exposure to wear decreasing proportionally. HDF panels in particular are becoming increasingly popular with their high compressive strength.

Properties of HDF Panels:

Properties of HDF Panels:	HDF
Transverse Stress Resistance	2-1.0 N/mm ²
Tearing Strength	2-1.0 N/mm ²
Moisture Expansion 24 hours	< 15%
Moisture Expansion	< 1%
Panel Moisture	1-6%
Dimension	less of tension

The selected panel offers the following advantages:

HDF Panels:

- high compressive strength against load stresses
- high compressive strength
- good stability in joints and in corners

Tech. Tests: Abrasion		Kaindl Info
		9
		100% Recycled 100% Recycled

The quality of Kaindl Laminate and Real Wood Flooring is determined on the basis of more than 20 comprehensive technical tests to investigate their surface and functional properties. One of these surface tests is the Abrasion Test. However, the assessment of the quality of a floor may be the most important property with respect to the long-term use.

In Europe abrasion is measured by means of the "Taber Abraser Test" test method developed by Taber, Inc. (USA). However, this test method is not suitable for testing Kaindl Laminate in such conditions as presented in the tests at hand.

The Taber Abraser Test is, however, the test method used and recognised test method. It is based on DIN EN Norm 12067-2, a norm for the testing of HPL surface properties used in the context of abrasion tests for the testing of laminate flooring. This norm describes the test procedure in exactly.

Procedure according to DIN EN Norm 12067-2:
 Polishing discs filled with sandpaper are pressed against the testing surface of the test object with a normal pressure. Accordingly, a range of surface loss by the disc is to be determined. The number of revolutions made by the test object up to this point is noted and recorded as the "Initial Point" (IP).

The abrasive disc is required until 85% of the disc has been lost (lost). The total number of revolutions made by the test object up until this point is taken as the "Final Point" (FP). Using the formula:

$$\frac{100 \times (FP - IP)}{2} = \text{the mean value (AT) is determined}$$

When assessing different products, however, the following points may also be considered: the so-called abrasion resistance.

- Although the manufacturer complies with the norm, an absolutely comprehensive abrasion test cannot be carried out with samples from all of the same class of flooring.
- Although both the IP and the FP are noted, the determination of the surface loss will be less than in a comparative test. This means that in a comparison of the IP by itself using the destructive process, all the extent of the damage is 95% of the decorative surface; the mean value will be lower.

When stating the abrasion resistance in advertisement it is important to indicate:

- the test method by which the value was determined in some cases, testing is carried out in accordance with other methods which are not specified with the result that the test assumes the value is actually not correct.
- the value is calculated: $IP - AT \times 2 = FP$ (the mean value is given within 1% being made clear).

Under the auspices of the Verband der Europäischen Holzindustrie (VDEH) Association of European Laminate Flooring Manufacturers and according to EN 13959-2, the abrasion test of the carrier boards is carried out in accordance with the test method described in the above. The test method is carried out in accordance with the test method described in the above. The test method is carried out in accordance with the test method described in the above.



Venture of **GALA GROUP**



EURO Flooring Pvt. Ltd.

Gala House - Mysore Road Campus

#339/1, Bapuji Nagar, Mysore Road,

Opp. Satellite Bus Stand, Bangalore - 560026

Tel. : +91 80 33126364/69 Email: customer@euroflooring.co.in

www.euroflooring.co.in

Note : The Printed sample shown in this catalogue are only indicative of the colour patterns & finishes available, it may differ from the actual sample.